

ETR-IBOX NOVÁ ÉRA VIDEOANALÝZY II

Úplne nový štandard v AI



AI BOX 2.0

New standard in AI video analytics



Vyhovuje NDAA

Intrusion Detection

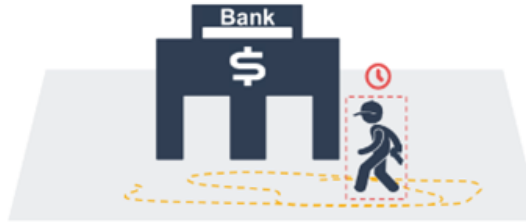


Detect people in no-entry zones, send notifications, and configure various other actions.

8 CH **Licensed**

No Rules in Use

Loitering Person



Detect people loitering in certain areas. It can enhance security by detecting behaves suspiciously.

8 CH **Licensed**

No Rules in Use

Virtual Fence

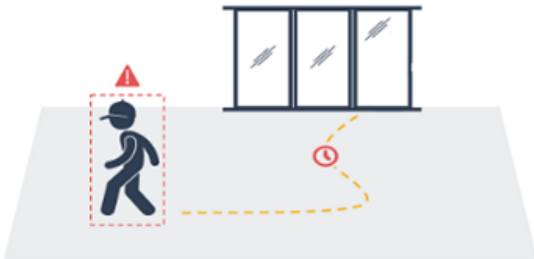


Set up virtual fences near key assets or facilities to monitor at all times and proactively detect intrusion attempts.

8 CH **Licensed**

No Rules in Use

Stay & Go



Detect objects that stay in and out of the surveillance zone for more or less than a certain amount of time.

8 CH **Licensed**

No Rules in Use

Stopping Detection



Detect people and vehicles that have been stationary for a certain period of time.

8 CH **Licensed**

1 Rules in Use

Zone Counting



Set up zones and determine real-time occupancy. Events can be set according to the number of people in the zone.

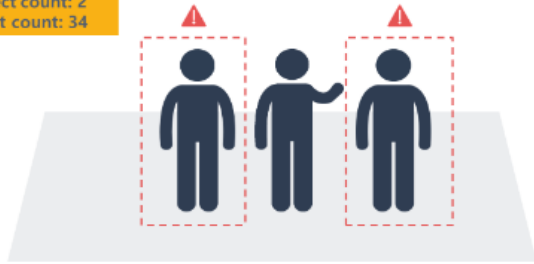
8 CH **Licensed**

1 Rules in Use

Multi Zone Counting

Trial activation

Object count: 2
Event count: 34



Set up multiple zones and determine real-time occupancy. Events can be set according to the number of people in the entire zone.

No License

No Rules in Use

Hand & Foot Intrusion



Detects who has touched a hand or foot in a secure area.

8 CH Licensed

No Rules in Use

Intentional Body Gaze Detector

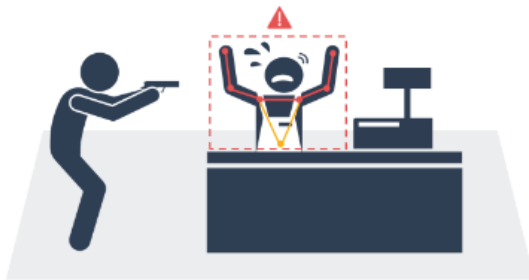


The direction of the body detects a person who is intentionally focusing their gaze in a specific direction. Detect someone who is interested in the exhibits in a show window or snooping through someone else's window.

8 CH Licensed

No Rules in Use

Imminent Threat



Detect threat situations through behavioral recognition and scene understanding technology.

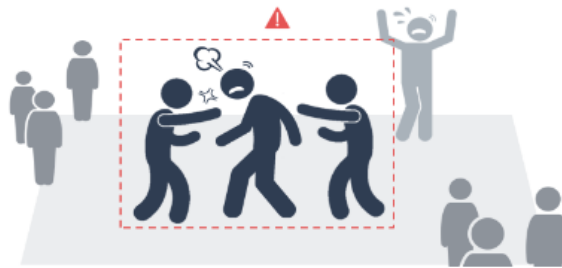
8 CH Licensed

No Rules in Use

Beta

Bullying Detection

Trial activation



Bullying Detection

No License

No Rules in Use

Fire & Smoke Detection



Detect flames and thick smoke in the surveillance area. A fire situation can be spread quickly.

8 CH Licensed

No Rules in Use

Beta

Aggressive Detection

Trial activation



Detect acts of violence such as fighting or one-sided assault.

No License

No Rules in Use

Occupancy Counting

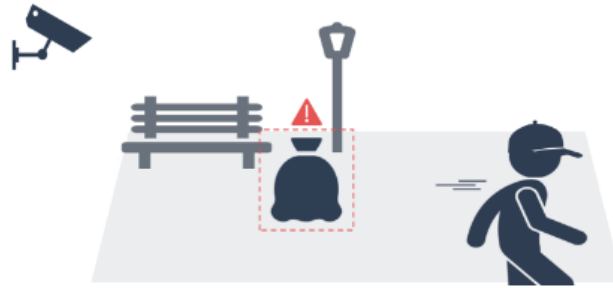


Calculates the number of people in the building by adding up entry and exit counts.

8 CH Licensed

Beta

Illegal Dumping



Detect abandoned objects. It can be used to detect dangerous objects or illegal dumping of garbage.

8 CH Trial Licensed Expires in 85 Day

1 Rules in Use

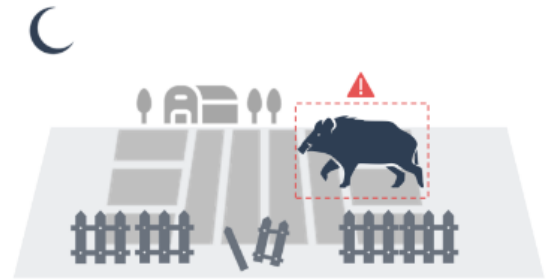
Occupancy Car Counting



Calculates the number of car in the parking lot by adding up entry and exit counts.

8 CH Trial Licensed Expires in 85 Day

Animal Detection



Detect animals suddenly appearing in surveillance area. Reduce property damage caused by animals.

8 CH Licensed

No Rules in Use

People Counting



Counts the floating population of a major area or count the floating population of multiple areas by summing up.

8 CH Licensed

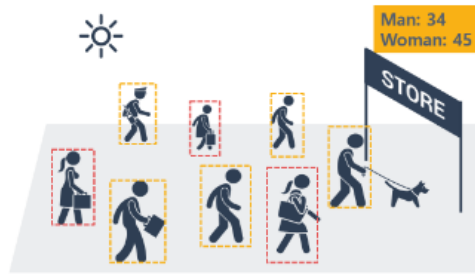
Vehicle Counting



The number of passing vehicles can be counted. Combined counting of passing vehicles from multiple channels.

8 CH Licensed

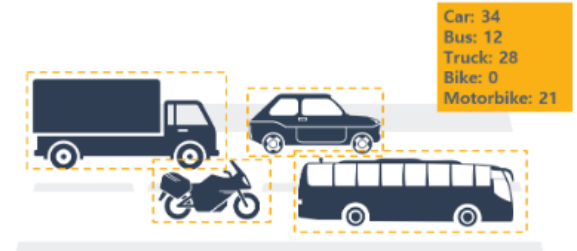
Advanced Visitor Analysis



Identify the gender distribution of customers. This will help you determine the types of products, placements, and purchases, as well as the types of customers you need to develop.

8 CH Licensed

Vehicle Type Counting



Cars, trucks, buses, bikes, and motorbikes can be counted by type. You can count by summing the number of vehicles by type in multiple channels.

8 CH Licensed

Dynamic Privacy Masking



Masks everyone except the person for whom the event was detected.

8 CH Licensed

Queue Management



Check the number of waiting customers and the average processing time of waiting customers.

8 CH Licensed

No PPE

Trial activation

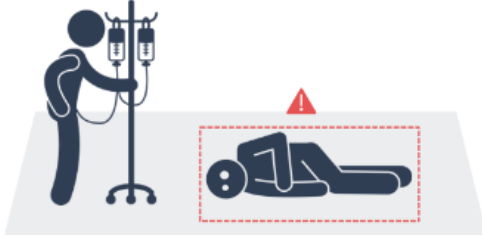


Recognizes non-wearing safety equipment in the surveillance area and sends a warning message to the non-wearing safety equipment or manager.

No License

No Rules in Use

Fallen Person Detection

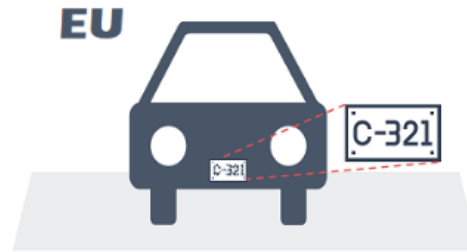


Real-time recognition of a fall and rapid propagation of an emergency can minimize human casualties.

8 CH **Licensed**

No Rules in Use

LPR-Europe



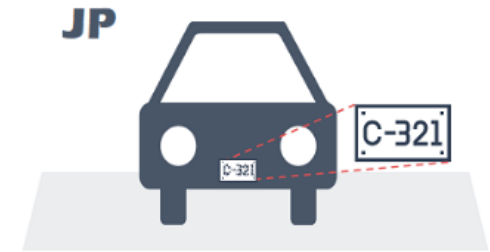
Recognizes license plates and compares them to pre-registered car numbers to generate events such as match/mismatch. For European license plate recognition only.

8 CH **Trial Licensed** Expires in 84 Day

3 Rules in Use

LPR-JP

Trial activation



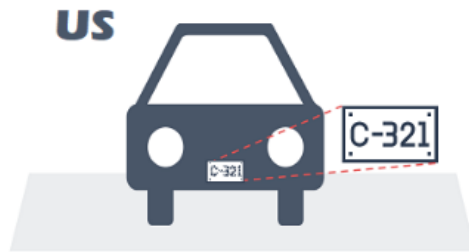
Recognizes license plates and compares them to pre-registered car numbers to generate events such as match/mismatch. For Japanese license plate recognition only.

No License

No Rules in Use

LPR-US

Trial activation



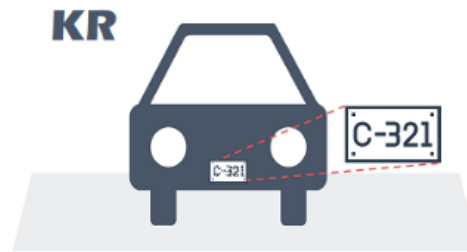
Recognizes license plates and compares them to pre-registered car numbers to generate events such as match/mismatch. For United States license plate recognition only.

No License

No Rules in Use

LPR-KR

Trial activation



Recognizes license plates and compares them to pre-registered car numbers to generate events such as match/mismatch. For Korean license plate recognition only.

No License

No Rules in Use

Crowd Detection



Set a zone from the camera image and understand the congestion level and frequency of the zone.

8 CH **Licensed**

No Rules in Use

Beta

Human Prolonged Stay

Trial activation



Detects suspicious people loitering in a single area with behaviours indicating poor intentions such as robbery.

No License

No Rules in Use

Beta

Forklift No Helmet

Trial activation



Detect if the forklift driver is not wearing a helmet.

No License

No Rules in Use

Staff Exclusion People Counting

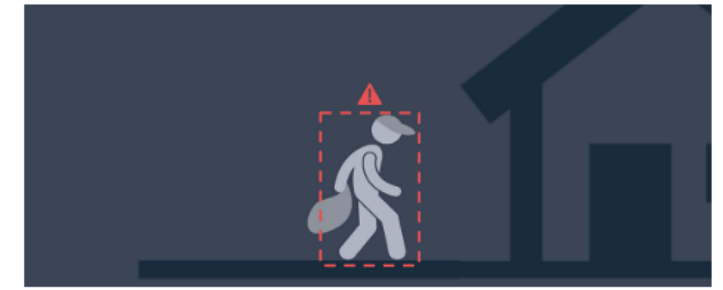
Trial activation



Exclude employees from people counting.

No License

Thermal Intrusion Detection

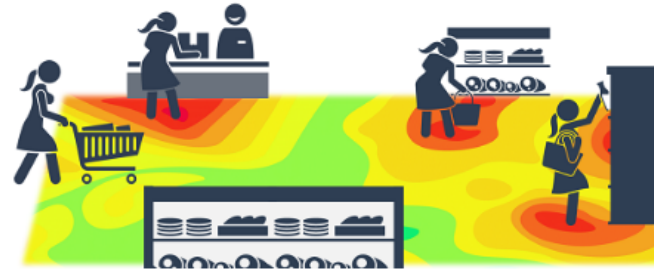


Dedicated human detection using advanced thermal imaging.

8 CH Licensed

No Rules in Use

Heatmap



Heatmap data of areas where people have been detected can be generated for service improvement. By visually representing the heatmap data, areas of high and low activity can be emphasized.

8 CH Licensed

Advanced Heatmap

Trial activation

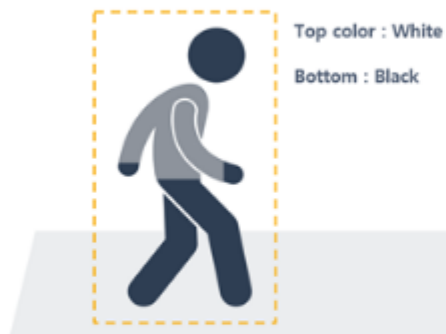


Generates heat map data that reflects customer interest through behavioral analysis. You can identify and visualize the degree of customer interest in multiple areas, such as each shelf or exhibition area in a store.

No License

Beta

Basic Attribute



You can distinguish the color of the detected person's top and bottom clothing. You can filter events or send metadata for later searches.

8 CH **Licensed**

Beta

Advanced Attribute



In addition to basic attributes, you can distinguish detailed attributes such as age, gender, bag, and hat. You can filter events or send metadata for later searches.

8 CH **Licensed**

ĎAKUJEME
ZA POZORNOSŤ